

A modern interior space featuring a long, thick wooden table with a natural grain finish. The table is supported by a translucent green glass base. In the background, there are several tall, cylindrical concrete pillars. To the right, a wall is decorated with a repeating pattern of dark, teardrop-shaped cutouts, some of which are illuminated from within, casting a green glow. A modern orange and white chair is partially visible on the right side of the frame. The ceiling is made of concrete and has recessed lighting strips that create a warm, ambient glow.

KONDYLISGROUP

256 5TH AVENUE NEW YORK 10001

KONDYLISGROUP
256 5TH AVENUE NEW YORK 10001
10/12 KIFISIAS STREET MAROUSI GREECE





**THE #1 RATED CONCRETE WATERPROOFING
PRODUCT IN THE WORLD
NOTHING BEATS**

Basecrete Kit

Basecrete is a waterproof bondcoat system for use in all applications where a solid and durable waterproof barrier is required. Basecrete is applied as a kit consisting of one bucket and 3 bags of will adhere to most surfaces, is resistant to most chemicals and corrosive agents and can withstand a high degree of movement while maintaining its integrity. Basecrete can be used to protect any concrete structure or surface from deterioration due to water infiltration. In addition Basecrete protects the underlying structure against the corrosive elements often found in water such as salt. Basecrete is also completely resistant to all the chemicals used in pool maintenance. In industrial applications Basecrete will protect the underlying structure against the destructive effects of many acids and other corrosive agents. Basecrete can be used to protect new construction against deterioration from above agents as well as to repair structures that have already suffered deterioration as a result of water infiltration and/or the effects of corrosive agents. Basecrete is a versatile multi-purpose overlay product imparting industry leading protection to all types of structures.



SKIN has introduced a cutting-edge solution to the industry - microplaster and waterproofing using advanced micro-ceramic technology. This enables you to safeguard both new and existing construction projects from water damage, enhancing the durability and longevity of your investment.

Building a home is a dream we all share. Immense care and effort go into designing, constructing, and decorating a house, making it crucial not to compromise on protecting your investment. Water damage is a primary issue faced by homeowners due to design shortcomings and inadequate protection. This problem is particularly prevalent in the case of in-ground concrete pools, which are susceptible to damage from water pressure and penetration.

With SKIN, you can apply a protective layer around the shell of your concrete pool. Our diverse range of finishing options ensures the finest pool finishes, guaranteeing that your pool remains safe from wear and tear for years to come while maintaining its pristine appearance. Moreover, SKIN is highly effective in general construction, where addressing water permeability is a persistent concern





SKIN®

SWIMMING POOLS - BALCONIES - TERRACES - ROOFS - DECKS - GARAGES
BATHROOMS - KITCHENS - COMMERCIAL PREMISES - SPORTS CENTERS



Basecrete Skin®

Decorative Flexible Waterproofing Finish
for Construction and Renovations

Basecrete Skin® is a powerful blend of polymers and specialized content, extremely resistant and easy to use wherever you need to protect and decorate.

Basecrete Skin®

Decorative Flexible Waterproofing Finish
for Construction and Renovations

ADVANTAGES

Mixing is done at the place of installation.
Only a 1mm layer is applied as a finish.
Adheres to any clean surface. No demolition.
Short curing time.
It is applied with spray, squeegee, trowel.

TECHNICAL SPECIFICATIONS

Impact Strength	19 Pounds / 8,6 kg
Compressive Strength	6500 psi / 48,6 MPa
Tensile Strength	732 psi / 5,05 MPa
Flexibility	2380 psi / 16,41 MPa
Concrete Bond Strength	1372 psi / 9,46 MPa
To Steel	1144 psi / 7,89 MPa
Shear Strength	720 psi / 4,96 MPa

Product Range

SKIN MICROCERAMIC®

Waterproofing coating without precedents that decorates and protects at the same time. Through the use of colored ceramic microspheres, an aesthetic waterproofing finish is obtained that is extremely resistant to filtration, salts, UV rays, acid stains and the passage of time, in a wide range of colors with high visual impact.

SKIN EVO®

Transparent polyurethane protective coating, anti-bacterial, anti-stain and long lasting.

SKIN FLOOR®

Basecrete + Skin Microceramic + Skin Evo.
Bi-component cementitious system in maximum 3 mm, for thin and continuous coating, suitable for floors, walls and countertops, indoors and outdoors. Rapidly transforms spaces without demolition.

Benefits

- Waterproofs the concrete surface.
- Densifies and strengthens concrete.
- Controls hydration of new concrete.
- Exfoliates trapped salts.
- Reduces rust formation on reinforcing bars.
- Reduces ASR (alkali silica reactivity).
- Accelerates concrete curing time.

BASECRETE SKIN® meets or exceeds the following standards:

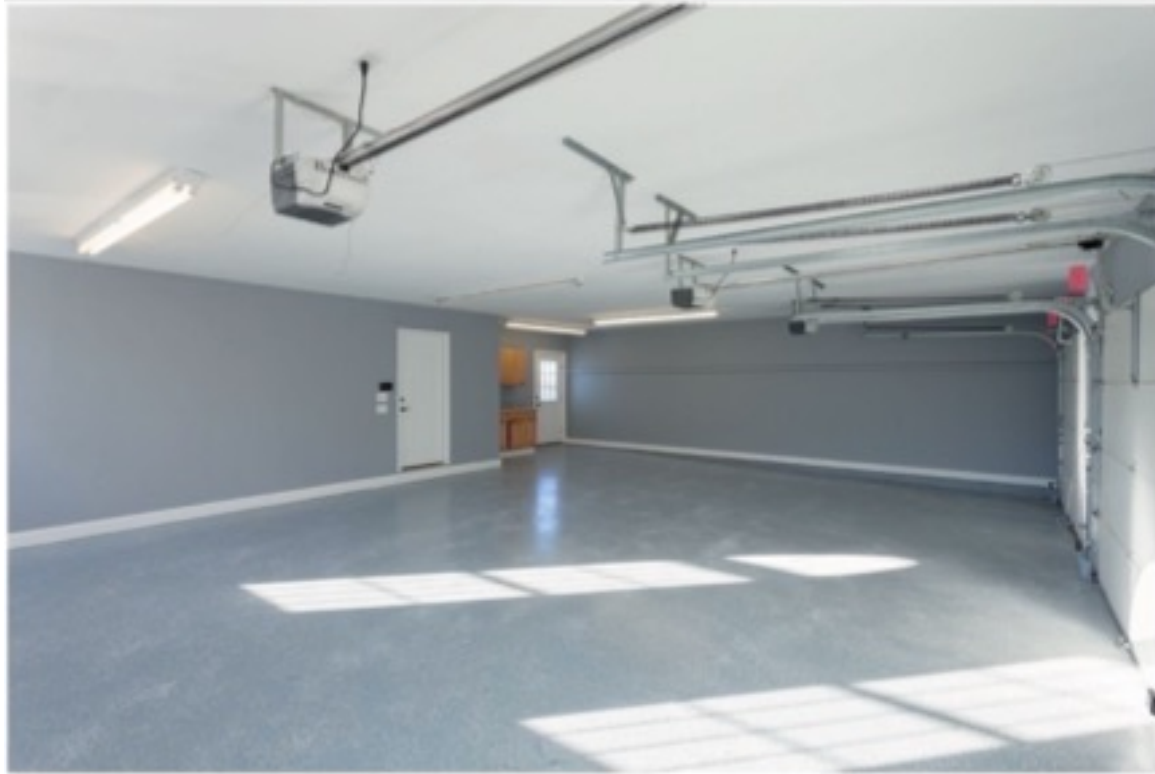
- ASTM E96: Vapor Transmission
- ASTM C321: Bond Strength
- ASTM C672: Freeze/Thaw
- ASTM D4541.02: Pull Off Test





Spain | Ibiza

Luxury villa in Ibiza, here Basecrete & skin micro plaster installed on swimming pool ,walls ,floors on exterior & interior uses



Skin®

After waterproofing with Basecrete®, it is possible to obtain a smooth finish with an almost "velvety" effect by applying a coat of Skin®, a mixture of very fine-grained cements and quartz. For the coloring we work with oxides managing to obtain a very wide range of colors.

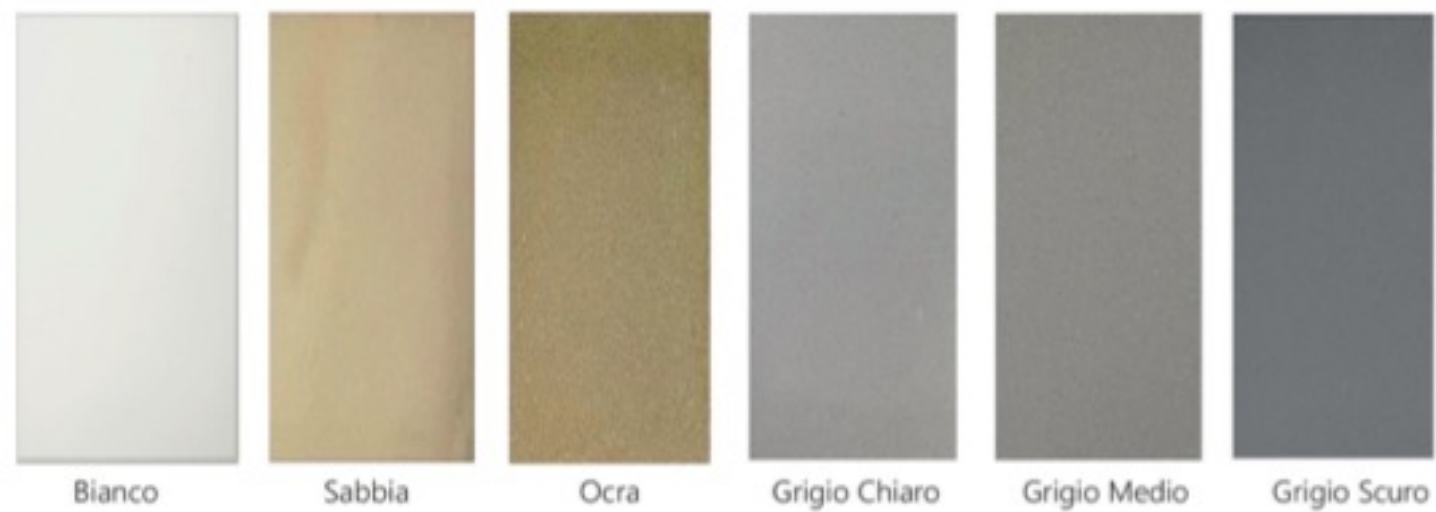
Skin Microceramic®

As in the case of Skin®, with Skin Microceramic® it is possible to obtain a smooth finish with an almost "velvety" effect using colored ceramic microspheres. With this product it is possible to create colors of great visual impact, being able to obtain the most diverse and imaginative effects.

Skin Evo®

On Basecrete® floors exposed to possible contact with oils and fats, it is advisable to apply a long-lasting anti-stain and antibacterial protective product. Skin Evo® is a transparent and resistant to foot traffic finish based on polyurethane resin in water dispersion and is available both matt and satin.

(table 2 resistance to chemicals)



Skin Floor®

Skin Floor® is a two-component, modified cement-based polymer system intended for the decorative and protective coating of walls, floors and bathrooms for interiors and exteriors with a high aesthetic effect.

It is used to return luster to old floors by applying it directly both on concrete and on existing ceramic floors, in industrial environments, commercial premises, residential buildings, etc. all in just 3mm.

The system is made up of a base (Basecrete®), thanks to this system there are no problems deriving from possible rising damp as Basecrete® is already a vapor barrier, eliminating the problems of these types of products deriving from water.

And with an antibacterial and anti-stain polyurethane finish (Skin Evo®).

Skin Floor® is white and pigmentable with its oxides.

The surfaces thus obtained have characteristics of high resistance to pedestrian traffic and atmospheric agents, giving the product excellent durability over time with the possibility of use in health and food environments due to the certifications.

With this product the SKIN range is complete giving the possibility for professionals to use a single finish inside the pool, outside the pool and inside the house including bathrooms and showers.



Basecrete's unique properties make it an ideal solution to most of the corrosion problems affecting concrete structures today. Basecrete can be used to protect new structures against corrosion causing agents and on existing structures which have begun to deteriorate due to the corrosive effects of agents such as water, chlorides or other corrosive agents.

Applying a thin layer of Basecrete to a new structure will prevent water and chlorides from penetrating the substrate and damaging the structure by oxidizing the reinforcement within the concrete. Basecrete in addition to being waterproof is highly resistant to common corrosive elements such as chlorides and other acidic elements.

In structures that have corrosion damage such as cracking and spalling, Basecrete can be used to repair damage that has already been done and to seal the structure afterwards to prevent further damage. A common problem is delamination of the surface layer on concrete structures due to water infiltration. A protective coating of Basecrete under the outer layer will eliminate this problem in most cases.

Balconies in coastal condominiums are a great example of a concrete structure where a protective layer of Basecrete will eliminate future coat delamination problems

TECHNICAL SPECIFICATIONS

Impact resistance

19lbs / 8.6kg

Compressive Strength 6500 psi / 48.6 MPa

Tensile capacity

732psi/ 5.05MPa

Flexibility

2380 psi/ 16.41 MPa

Adhesive strength

Concrete 1372 psi /9.46 MPa Steel 1144 psi/ 7.89 MPa

Cut resistance

720psi/4.96MPa

ASTM standards

ASTM E96:

Steam transmission

ASTM C321 :

Binding ability

ASTM C672:

Freeze/Thaw ASTM d4541.02 :

Lift Test

Table1

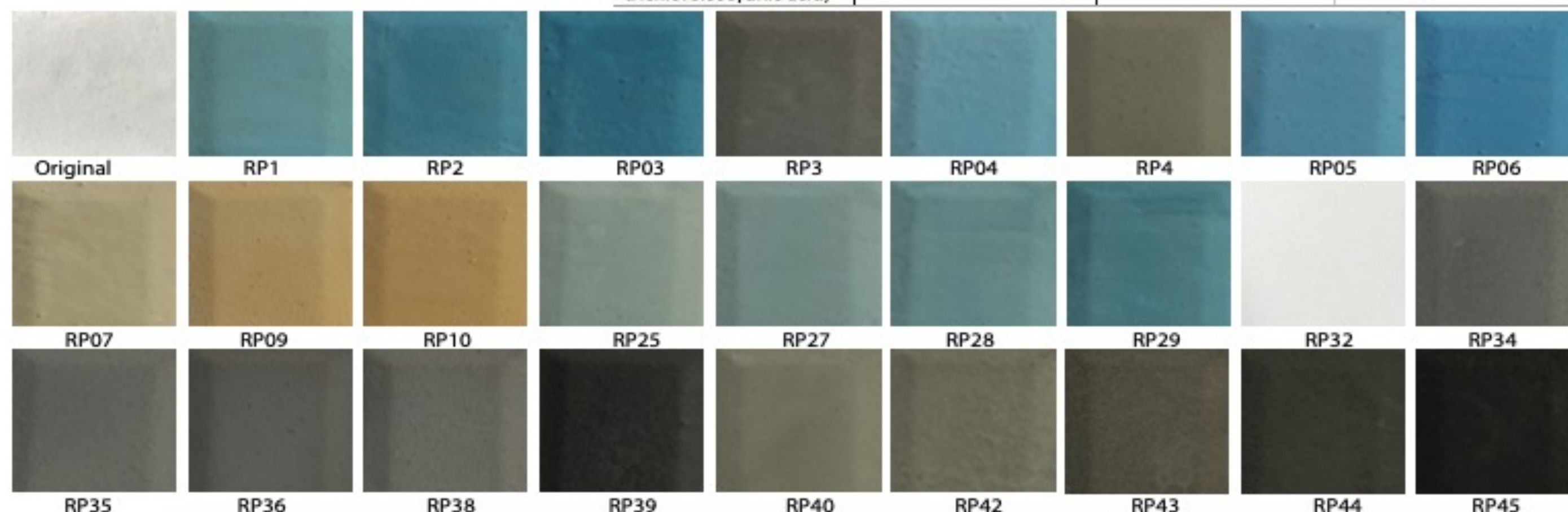
resistance to the most common staining agents	contact time		resistance to the most common staining agents	contact time	
	30 min	24 h		30 min	24 h
water	●	●	bleach	●	●
vinegar	●	●	neutral detergents	●	●
citric acid 10%	●	●	Ketchup	●	●
hydrogen peroxide 10 vol.	●	●	Mascara	●	●
denatured alcohol	●	●	olive oil	●	●
ammonia	●	●	Water-based markers	●	●
descaler	●	●	indelible markers	●	●
coffee	●	●	red wine	●	●

Legend

●	great	no rings or spots are observed
●	good	appearance of light scarcely visible rings
●	scarce	appearance of obvious rings or spots

Table 2

Chemical product	Test focus	results after 24 hours of contact	results after 48 hours of contact
sulfuric acid (commercial concentration 37%)	10%	no visible degradation	no visible degradation
hydrochloric acid (commercial concentration 23%)	10%	no visible degradation	no visible degradation
bleach (15% commercial concentration)	15%	no visible degradation	no visible degradation
salt	100 g/l	no visible degradation	no visible degradation
hydrogen peroxide (350 g/kg of hydrogen peroxide)	35 g/l of hydrogen peroxide	no visible degradation	slight whitening
chlorine tablet (960 g/kg of trichloroisocyanic acid)	100 g/l in trichloroisocyanic acid	no visible degradation	no visible degradation





SKIN



SKIN





**BASECRETE EUROPE
2023**



Pools



Basecrete unique all-in-one formula combines PSI, shear bond, tensile, adhesion, and flexibility to give your pool reliability. We makes pools waterproof and creates a bond for the pool's final decorative finish of your choice, such as plaster or tiles.

Decks and Balconies



Our waterproofing products are specially designed to protect exterior concrete and decking surfaces against weather damage, UV radiation, and general wear and tear from pedestrian traffic and other impacts. Additionally, our concrete waterproofing products offer excellent protection in industries where surfaces experience heavy shock, impact, high temperatures, or exposure to chemicals.

Patching



Over time concrete work will start to show signs of wear and tear, this can be anything from water damage, heavy traffic, settling foundation, to cracks and chips. Basecrete will bond with the existing concrete to create a waterproof barrier that prevents moisture from penetrating through the different cracks in the concrete ensuring durability and longevity in your concrete structure for years to come.

Bridges



Bridges are built in a variety of areas where the topography, ground conditions, or other existing structures and developments are unsuitable for conventional pathways, roads or railway construction. Therefore, bridges are found in the most challenging, exposed environments. Basecrete adds strength to these bridges which allows them to remain in place and stand the test of time.

Parking Garages



Parking garages are essential for helping traffic flows and providing safe spaces for cars in cities. Basecrete offers a clean application and resurfacing services that support color and painted lines, allowing traffic to resume almost immediately after initial application, even trucks and heavier vehicles.

Micro - topping



Concrete is prone developing cracks and blemishes as it ages. Basecrete can be used to cover and smooth these cracks. It can also serve as a base for tile work. For even more protection, it can be mixed with different color pigments so there's no need to have to paint.

Stucco



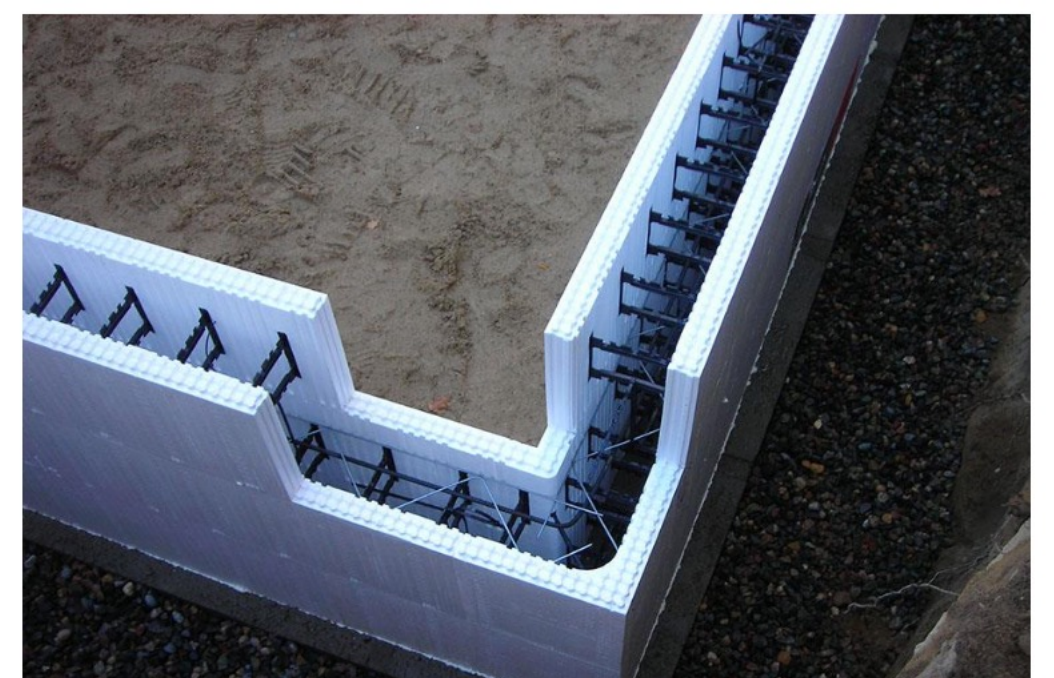
Stucco is a siding material made of cement, aggregates, bindings, and water. Applied in thin coats, stucco can last between 50-80 years. However, the siding will crack as foundation settles, and shifts. Overtime stucco will develop hairline cracks, but by applying Basecrete on top of your stucco, it creates a durable sealant to protect against the cracks and settling associated with a standard stucco finish.

All Water Container Vessels



Basecrete formula is perfectly formulated to ensure that fountains, decorative water features, or any vessel that's meant for holding water stays leak free and waterproof. The flexible membrane is also approved for contact with drinking water making it an excellent choice for large reservoirs, dams, and other major fixtures where clean drinking water is a necessity.

ICF Construction



The ICF building age is here and you need to protect your work from water and chemical intrusion. That's why fast drying, cost-effective and super-strong Basecrete is the answer you are looking for.

No messy applications, easy to mix and apply, Basecrete strengthens the overall structure. Plus, with our 10 year waterproof guarantee, NOTHING BEATS Basecrete.

Product Features

WHAT MAKES BASECRETE GREAT?

- UNPARALLELED ADHESION
- EXTEREME FLEXIBILITY
- 100% WATERPROOF
- CHEMICAL RESISTANT
- SIMPLE APPLICATION
- SCIENTIFICALLY PROVEN
- 10 YEAR GUARANTEE
- CUSTOM COLORS

1 Product, 101 Applications



IMPACT STRENGTH
19 lbs / 8.6 kg



COMPRESSIVE STRENGTH
7050 psi / 48.61 Mpa



TENSILE STRENGTH
732 psi / 5.05 Mpa



FLEXURAL STRENGTH
2380 psi / 16.41 Mpa



ADHESIVE STRENGTH
Concrete : 1372 psi / 9.46 MPa
Steel : 1144 psi / 7.89 Mpa



SHEAR BOND ADHESION
720 psi / 4.96 MPa

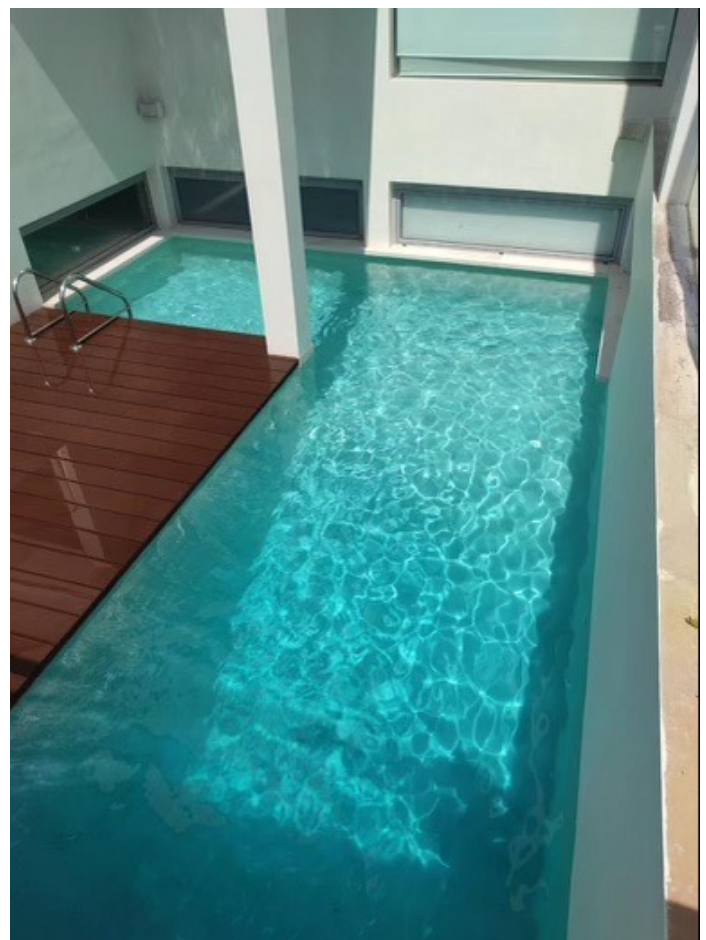
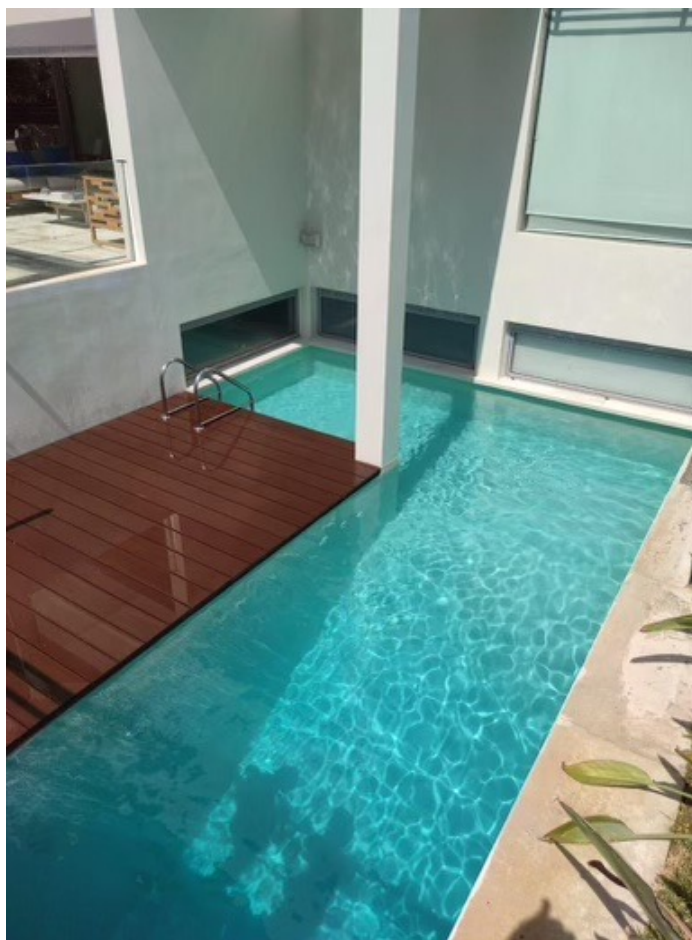


Some of our clients











SKIN AND WATER

STONE AND WATER

POOL

DECO

MARBLE AND MOSAIC SPECIALIST

Make it look easy.



TURNKEY
KONDYLIS GROUP

5TH AVENUE MANHATTAN



KONDYLISGROUP

256 5TH AVENUE NEW YORK 10001
10/12 KIFISIAS STREET MAROUSI GREECE

info@kondylisgroup.com